

Integrating Classworks into the Continuous Improvement Model

Background

The Continuous Improvement Model (CIM), a quality-based approach that tracks student performance, is based on research, helps close the achievement gap between all racial and socioeconomic sub-groups, and is performance-driven.

Implemented at all levels, the CIM treats students individually by assessing how much they're learning at regular intervals. Based on these assessments, students who have achieved the mastery level receive enrichment to challenge them further. Others receive remediation to bring their skills up to accepted standards.

An effective school features proportions of both low- and middle-income level children demonstrating high levels of mastery of the essential curriculum. There are no differences in the proportion of students mastering the basic skills as a function of the group to which they belong.

A quality, effective school staff believes all students can learn and they can teach all students, sets high expectations, develops clear vision, focuses leadership on this vision, aligns planning for instructional assessment, and implements the "Plan-Do-Check-Act" instructional process.

Plan-Do-Check-Act requires careful analysis of student performance data and planning the instructional calendar. This step leads to delivering the instructional focus in the classroom, followed by checking the assessment, maintenance, and monitoring of the instructional focus. Finally, acting provides enrichment and tutorials based on individual student needs.

Classworks Solution

Curriculum Advantage is a curriculum and technology company specializing in localized, data-driven curriculum solutions. Classworks is ideally suited to help schools meet the requirements of and support their Continuous Improvement Model. Classworks is also a key intervention program when a student performs below grade level in reading or math.

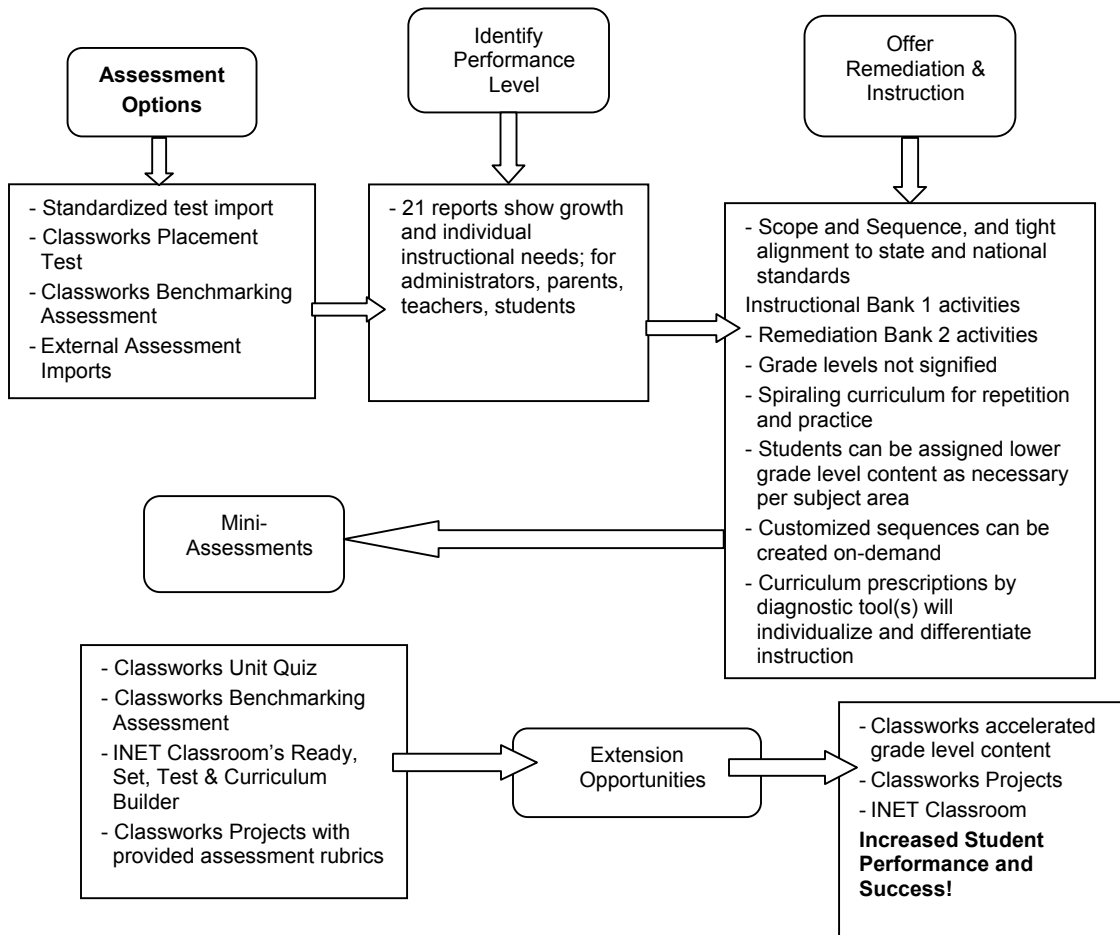
Classworks unique features include:

- Individual Learning Paths through the state FCAT import utility: Import students' state assessment scores (SSS or NRT) and Classworks will automatically create individual learning paths to address each student's needs which become part of each student's Individualized Success Plan.
- State Standard and Assessment Reports: Classworks provides detailed reports of student progress based on state standards and assessment results for instant accountability. Teachers and administrators can use this data to remediate for gaps and weaknesses for better performance.

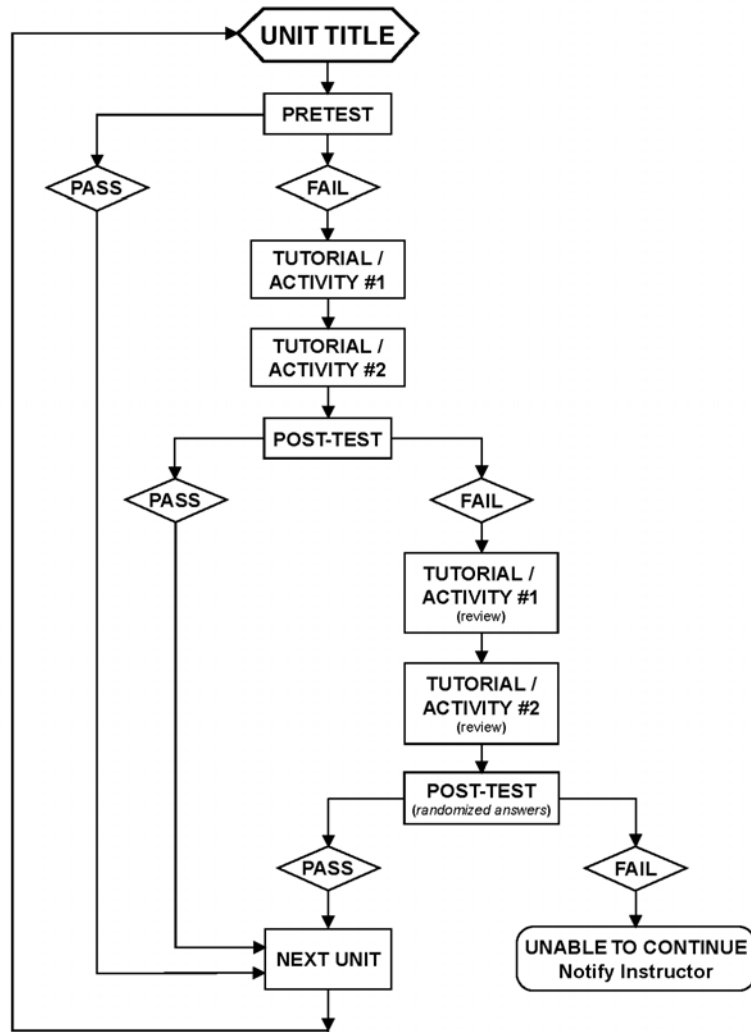
*See Appendix A for an example of the Classworks Results with Alignment Report.

- An extensive reporting system to help teachers and administrators document student progress and address accountability issues.
- Success in a variety of implementations, including:
 - On grade level skill practice in the classroom
 - Intervention for struggling students in extended day and summer school programs
 - Remediation in building block skills
 - Individualized instruction and practice
 - Practice for statewide high stakes assessments
 - State standard mastery
 - Students reading below grade level
 - Targeted instruction for ESE or ESL population
- Extensive Content. Classworks has:
 - More than 180 interactive software titles from leading publishers aligned to the state standards and test objectives
 - 10,000 plus award-winning activities
 - Over 1,650 skills and concepts sequenced by grade level and subject
 - More than 4,000 hours of interactive, standards-based, managed curriculum
 - Expanded academic enrichment opportunities in the form of cross-curricular projects that are ideal for enrichment and application of skill mastery

Instructional Structure of Classworks



The structure of each Classworks unit is as follows:



The foundation of the Continuous Improvement Model (CIM) is built on Total Quality Management principles, Effective Schools Correlates, and the Eight Step Instructional Process. The CIM can be adapted to suit any school district's particular needs, but generally contains the following elements:

- **Analyzing the Data:** Schools and central staff analyze information obtained from classroom and district assessments to evaluate the academic strengths and weaknesses of individual students.

Classworks assists in the early identification of areas of need and provides the intensive intervention required to help students master essential skills. This is done with benchmarking tests as well as 21 different reporting tools to inform instruction. Comprehensive reporting gives teachers and administrators the tools they need for data-driven decision making. Students benefit from the use of complete and accurate documentation that allows schools to implement the most effective course of study.

With Classworks' unique import utility, schools have the ability to import state assessment scores directly into Classworks, where the system prescribes individualized learning paths based on student needs. These prescribed learning paths become part of the Individual Success Plan for each student, helping individual students improve in areas of weakness made apparent by low scores on the assessment. With Classworks, a teacher can import scores with one simple step and immediately see prescribed, individualized lessons for each student from Classworks' vast library of 10,000 plus learning activities. Progress is then reported per student aligned to the state standards and test objectives.

- **Instructional Timeline:** Based on district curriculum and state standards, timelines are designed to give scope and sequence of the most essential curricular concepts in reading and math.

Classworks is a reading and math technology-based curriculum that covers student learning from kindergarten through the high school exit exam level. Content is based on NCTM, NCTE, IRA, and State Standards to ensure coverage of identified necessary topics, skills, and scope of knowledge.

Classworks is a flexible system that can be organized as a spiraling or ladder curriculum to meet a variety of curriculum needs. This approach is effective in starting students with building block skills and guiding them through the learning process to more complex understanding of concepts, with a consistent goal of having students succeed with 'on grade-level' curriculum and beyond. Teachers can organize Classworks instructional sequences easily to provide the targeted instruction they choose.

- **Instructional Focus:** The instructional focus is a key concept to be taught to mastery over a 1-3 week period. At the end of the period children are assessed to their level of mastery. Those that demonstrate mastery participate in enrichment activities, while those that need further instruction participate in remediation/tutorial activities.

Each unit contains activities from different educational software titles, ensuring high student interest and appeal. Custom sequences can be easily created around each key concept to provide instruction within the 1-3 week learning period, prior to assessment of mastery. Students experience only the highest quality individualized instruction while

progressing through the purposeful sequence of activities in the content area. When students do not master the skills, they are automatically assigned remediation activities for increased opportunity for mastery. Enrichment is provided through accelerated grade-level content, Classworks Projects, and INET Classroom, an online research tool with over 170,000 web-based resources that have been reviewed and organized by educators.

- **Instruction/Tutorials:** Instruction should focus on skills that align with the state standards with measurable results.

Classworks State Editions align curriculum and content to state standards and high-stakes test objectives to ensure focused instruction to meet the needs of each state, allowing for the greatest opportunity for mastery of standards, high performance on high-stakes assessments, and academic success. The Classworks prescription drills down to the instructional level determined by each state through its standards, benchmark skills and subskills, or other instructional unit. Engaging activities motivate students to develop their skills while allowing them to advance at their own pace, and individualized instruction ensures that each student's needs are met by providing appropriate learning paths as the student progresses through skill levels. It includes comprehensive curriculum materials, as well as a set of tools that let teachers and administrators manage, assess, and customize their students' learning process. Close progress monitoring through the management system ensures measurable results for informed instruction and accountability.

- **Short Frequent Assessments:** Short quizzes are designed to measure students' mastery of the instructional focuses. Teachers assess student learning frequently to insure academic success.

The Quick Quiz provides intermediate tracking of student performance through quiz results at the end of each Classworks unit. This ten-item assessment tool measures the student's proficiency in the skill of the unit. Students scoring less than the minimum criterion score on the Quick Quiz are automatically branched to the remedial Activity Bank for more instruction and practice. At the end of this second set of activities, students can take the Quick Quiz again.

The Classworks Benchmarking Assessment (CBA) is a seamless diagnostic/prescriptive tool tying assessment to instruction. CBA measures student mastery of benchmark skills, and automatically creates a learning path for each student based on the results. Students can be assessed for mastery either by discrete skill or broader instructional concepts. CBA completes the loop between informed instruction, student activities, assessment results, and accountability.

With Classworks, results from any outside assessment – high-stakes tests, chapter tests, norm-referenced tests – can be imported to inform further instruction, remediation, or the next critical steps in the learning path.

- **Maintenance and Monitoring:** Skill acquisition for each student is constantly checked and rechecked. Student progress monitoring is an ongoing process.

Classworks' extensive management and reporting system supports close progress monitoring by parents, teachers, and administrators. As students progress through each unit, detailed information about their performance on each activity is measured and reported upon, all aligned to state standards. Teachers can immediately and

continually use the Classworks manager to see how each student is progressing in his or her own course of study.

Classworks assessments, used in conjunction with state required assessments, can help school districts to gather the data needed to make immediate and effective educational decisions that will ensure student academic progress. Classworks assessment tools allow teachers to screen students for academic strengths and weaknesses, diagnose appropriate learning paths, prescribe the appropriate course of study based on standards, and monitor student progress. The results of the assessments provide a means for teachers to group students by instructional needs or assign individualized instruction.

A sampling of the reports with a brief description of each is listed below.

- **Class Status Report** – summarizes what students have been doing in Classworks from their first day to present
- **Activity Result** – gives teachers details of the skills students have worked on, similar to a grade book
- **Unit Time on Task** – shows how much time the student has worked on a unit in graph form
- **Results with Alignment** – provides student results aligned to the specified state standards
- **Student Summary**– provides an individual assessment of each student for each skill
- **Parent Report** – a personalized narrative report that describes each skill and provides parents with information about student scores and time on task

Working with the Classworks solution, educators are able to access the resources that they need to assess, diagnose, prescribe, and implement the best educational plan for each individual student. Using resources backed by scientifically-based research, Classworks provides teachers with an educationally sound program that addresses students' multiple learning styles and academic needs.

Continuous tracking of student progress combined with the ability to re-assess student needs and re-evaluate prescribed learning paths gives Classworks users the flexibility required to always be aware of and to address students' academic challenges. In addition, the extensive reporting system contained in Classworks provides documentation of the educator's data-driven decisions, and allows a means of communication to parents and administrators. This solution provides the tools for all students to succeed through the Continuous Improvement Model.

To learn more about how Classworks can help your students, please visit www.curriculumadvantage.com, or call 1-800-411-4337.

Appendix A

Results with Alignment Report

This report shows student results as aligned to specified Sunshine State Standards. The state standard is identified and then the corresponding Classworks unit is listed. Student scores from work within the corresponding unit are reported.

As the student completes the units, their mastery of the skill is noted. The success of the student within Classworks gives an indication of how well students understand the concepts/skills outlined in the state standards. The documentation in this report provides additional accountability support for teachers and administrators.

Classworks Florida Edition			
Student Results with Alignment			
Student: 0021 Student 21, Typical			
Class: Florida Math Grade 7			
Teacher: Teacher, Typical			
Sequence: Math Grade 7			
Objectives(s) / ClassWorks Unit(s)	Correct/Attempted	Percent	Time on Task
4. The student expresses numbers in scientific notation as numbers in standard form. Unit 010 Skill Builder - Scientific Notation	5/5	100%	02:20:33
Benchmark MA.A.2.3.2: The student understands the structure of number systems other than the decimal number system.			
1. The student applies knowledge of the decimal number system and of non-place-value systems.			
Unit 004 Comparing and Ordering Greater Decimals	9/9	100%	00:30:00
Unit 031 Using Positive and Negative Integers	5/5	100%	01:09:44
Standard 3: The student understands the effects of operations on numbers and the relationships among these operations, selects appropriate operations, and			
Benchmark MA.A.3.3.1: The student understands and explains the effects of addition, subtraction, multiplication, and division on whole numbers,			
1. The student knows the effects of the four basic operations on whole numbers, fractions, mixed numbers, and decimals.			
Unit 008 More Dividing Decimals by Decimals	5/10	50%	00:57:31
Unit 014 Adding and Subtracting Fractions	7/10	70%	00:45:55
Unit 015 Multiplying Fractions	8/10	80%	02:41:00
Unit 016 Dividing Fractions	9/9	100%	01:59:35
Unit 017 More Adding and Subtracting Mixed Numbers	5/5	100%	02:13:47
3. The student applies the properties of rational numbers to solve problems (commutative, associative, distributive, identity, equality, inverse).			
Unit 033 Skill Builder - Properties of Rational Numbers	5/5	100%	02:27:53
4. The student knows the inverse relationship of positive and negative numbers.			
Unit 044 Understanding Inverse Operations	5/5	100%	01:55:00
Benchmark MA.A.3.3.2: The student selects the appropriate operation to solve problems involving addition, subtraction, multiplication, and division			
of 1. The student knows the appropriate operation to solve real-world problems involving fractions, decimals, and integers.			
Unit 001 More Multistep Multiplication and Division Problems	5/5	100%	02:37:59
Unit 046 Solving Equations Using Multiplication and Division	5/5	100%	02:48:05
2. The student solves real-world problems involving decimals and fractions using two- or three-step problems.			
Unit 049 Skill Builder - Decimal and Fraction Word Problems	7/10	70%	00:58:46
3. The student solves real-world problems involving percents (for example, discounts, simple interest, taxes, tips).			
Unit 076 Using Percents	8/10	80%	01:34:11

001CAAM1104A