



TECHNOLOGY FOR TAILORED LEARNING

Integrating Classworks with the Florida Continuous Improvement Model

Introduction

The Florida Continuous Improvement Model (FCIM) is a program for school reform and improvement, based on Total Quality Management principles, Effective Schools research, and the Eight Step Instructional Process. This article will describe the Florida Continuous Improvement Model and describe how Classworks, by Curriculum Advantage, Inc., can be an extremely powerful tool as part of this model.

Florida Continuous Improvement Model

Florida's Continuous Improvement Model (FCIM) is an ongoing process in which data analysis drives classroom instruction in areas of needed improvement. High student achievement based on the Sunshine State Standards is the instructional goal of the FCIM.

Implemented at all levels, the FCIM assesses student learning to improve student achievement. Based on the resulting data, students who have achieved mastery receive enrichment to challenge them further. Others receive tutorials or remediation to bring their skills up to accepted standards.

Components of FCIM:

- **Data Disaggregation**
- **Instructional Focus Calendar**
- **Instructional Focus Lessons**
- **Mini-Assessments**
- **Tutorials, Enrichment and Maintenance**
- **Monitoring**

Classworks

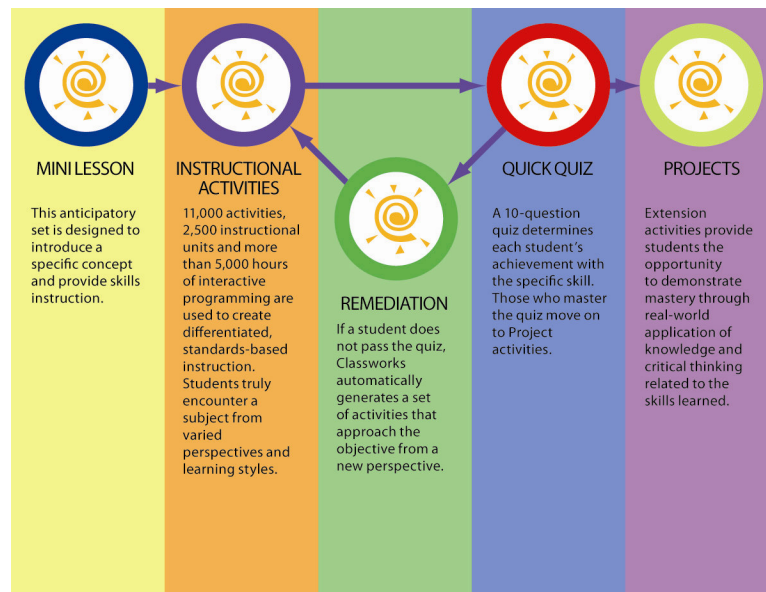
Classworks offers computer-based instruction aligned to Florida Sunshine State Standards that is ideally suited to help schools integrate instructional technology with the Florida Continuous Improvement Model. Classworks' rigorous content is effective in starting students with building block skills and guiding them through the learning process to more complex understanding of concepts, with a consistent goal of having students succeed with 'on grade-level' curriculum and beyond.

Classworks' unique features include:

- **Rigorous, Relevant Content:**
 - Award-winning software titles from leading publishers aligned to Sunshine State Standards and the FCAT
 - 11,000 engaging activities making up 2,404 instructional units
 - 1,650 skills and concepts organized by grade, subject and state standards
 - 5,000 hours of interactive, standards-based, managed activities
 - 6,054 valid and reliable items in the Benchmarking Assessment
 - Expanded academic opportunities in the form of cross-curricular projects
- A management system that assesses, diagnoses, prescribes and implements the best individualized educational plan for each student.
- The ability to read and import student results from the FCAT and automatically prescribe an individual student learning path for each student.
- Reporting and progress monitoring enabling teachers and administrators to manage student instruction and monitor progress at the site or district level.

Classworks is organized into skill-based instructional units that provide depth and breadth for every concept, ensuring mastery and increased student achievement. The engaging activities with multiple instructional approaches provide differentiated instruction - motivating students by providing fresh ways to learn a skill or concept.

Within the framework of the FCIM, Classworks units address each component.



Classworks and the FCIM Process

Data Disaggregation

Determine academic strengths and weaknesses

Classworks assessments, used in conjunction with state required assessments, can help school districts gather the data needed to make immediate and effective educational decisions that will ensure student academic progress. Classworks assessment tools allow teachers to screen students for academic strengths and weaknesses, diagnose appropriate learning paths, prescribe the appropriate course of study based on standards, and monitor student progress.

Classworks assists in the early identification of learning deficits through assessments and reports, giving educators the data required to apply needed intervention to individual students. Complete and accurate documentation on assessment results, content mastery and time-on-task allows schools to evaluate data and make informed instructional decisions.

Students benefit from the use of complete and accurate documentation that allows schools to implement the most effective course of study.

Instructional Focus Calendar

Develop a timeline to address identified academic weaknesses

Classworks is a technology-based curriculum that covers student learning from kindergarten through the high school exit exam. Content is aligned to Florida Sunshine State Standards to ensure coverage of identified necessary topics, skills, and scope of knowledge. The instruction can be customized to match the district or school curriculum map, pacing guides, and instructional calendar.

Classworks is a flexible system that can be organized as a spiraling or ladder curriculum to meet a variety of curriculum needs. This flexibility gives teachers the ability to organize, assign, and adjust instruction easily to provide relevant, targeted instruction at the appropriate time.

Instructional Focus Lessons

Provide explicit instruction of the identified benchmark skills

Classworks curriculum and content is aligned to Florida Sunshine State Standards and the FCAT to ensure focused instruction that meets the needs of students, allowing for the greatest opportunity for mastery of standards, high performance on the FCAT, and academic success. Classworks includes comprehensive curriculum materials, as well as a set of tools that lets teachers and administrators manage, assess, and customize their students' learning process.

Classworks instruction is organized in a way that maximizes the opportunity for students to learn the instructional focus in the classroom. Mini-lessons are designed to provide an anticipatory set or a tutorial, a way to teach the designated objective. They provide three instructionally effective elements to the unit – learn, apply and review. The 'learn' section has the initial delivery of instruction, including all content required to learn the concept. The application section of the lesson is for practice where consistent feedback is given. The third piece of the mini lesson is the

review, including all key concepts that will be assessed. Teachers can use Classworks mini-lessons to present each new skill to the class as a whole using 21st Century Classroom technologies. The instructional team can also quickly and easily assign students independent lessons reinforcing the instructional focus.

Each unit contains activities with different approaches to the same concept, having substantial student interest and appeal. Students experience only the highest quality of differentiated instruction while progressing; reinforcing the instructional focus of the classroom.

Mini-Assessments

Conduct Mini-Assessments to ensure mastery of benchmarks

Classworks offers many opportunities to assess student progress and mastery.

The Quick Quiz provides frequent, skill-based tracking of student performance through quiz results at the end of each Classworks unit. The quiz measures the student's proficiency in the skill learned in the unit. Students scoring less than the minimum score on the Quick Quiz are automatically branched to the remediation activities for more instruction and practice. After remediation is complete, students have another opportunity to show mastery.

The Classworks Benchmarking Assessment (CBA) is a seamless diagnostic/prescriptive tool tying assessment to instruction. CBA measures student mastery of benchmark skills, and automatically creates a learning path for each student based on the results. Students can be assessed for mastery either by discrete skill or broader instructional concepts. Assessing one skill at a time is an opportunity to use the results to guide instruction quickly, easily and often.

Classworks also reads student results from high-stakes tests and automatically prescribes individualized learning paths based on student needs. These prescribed learning paths become part of the Individual Success Plan for each student, helping individual students improve in areas of weakness made apparent by low scores on the assessment. Results from assessments – formative assessments, benchmark tests and high-stakes tests – can also be used to inform instruction, and assign targeted instruction for the next critical steps in the learning path.

Tutorials, Enrichment and Maintenance

Provide tutorials, enrichment and maintenance for all students as well as planned spiral reviews.

The Classworks prescription drills down to the most granular instructional level. Engaging activities motivate students to develop their skills while allowing them to advance at their own pace, and individualized instruction ensures that each student's needs are met by providing appropriate practice, reinforcement and remediation as the student progresses through skills.

Classworks provides differentiated student experiences for tutorial, enrichment and maintenance instruction:

- **Tutorial** – Basic instruction is provided through the mini-lesson. This is offered in a “learn, apply, review” format that gives the student opportunities to return to the lesson for reteaching and additional practice. Each instructional unit has activities that are

specifically designed for remediation, additional practice, and new approaches for a fresh way to learn the concept.

- **Enrichment** – This instruction is provided through accelerated grade level content and Classworks Projects. These projects are standards-based projects requiring students to think in complex ways while applying their learning to real world situations. This provides enrichment for high achieving students while still working within the area of instructional focus.
- **Maintenance** – The tutorials are paired in the unit with activities that are part of the spiraling curriculum, with opportunities to review concepts without losing the impact of the engaging content. By always offering multiple learning opportunities, students can continue to work on standards-based skills to reinforce concept mastery.

Monitoring

Monitor progress to evaluate program success

Classworks provides the tools for close and constant progress monitoring. As students progress through the instruction, detailed information about their performance on each activity is measured and reported upon. District-level reporting also provides the opportunity to assess progress among school sites, district-wide, or targeted student populations including demographics, grade levels, and classes.

- Teachers can access student results from their classroom
- Principals and other designated site administrators can access results from all students in the school
- District-level administrators can track all Classworks implementations across all schools, from the district office

Conclusion

Working with the Classworks solution, educators are able to access the resources that they need to assess, diagnose, prescribe, and implement the best educational plan for each individual student. Continuous tracking of student progress, combined with the ability to re-assess student needs and re-evaluate prescribed learning paths, gives Classworks users the flexibility required to address students' academic challenges. In addition, the management system provides documentation for data driven decisions. This solution provides the tools for all students to succeed through the Florida Continuous Improvement Model.

This document describing Classworks' integration into the Florida Continuous Improvement Model is based on the Florida Department of Education's work in FCIM and the successful model implemented by Dr. Gerald Anderson.